



Volume 18 No. 6

November, 2014

President: Tom Borloglou Vice President - Lloyd Donnelly
Secretary - Wes McNeal Treasurer - Rick Mannarino

Editor: Tom Ringenbach Email: tommamie@charter.net

Calendar of Events

- November 6- Regular Monthly Meeting; (Yacht Club, 7:00 pm.)
Program: Jake Niedling on "Turned Christmas Ornaments"
- November 11- Tour of Everhart Lumber, Tellico Plains (Gather at Cooper Center 9:00 am)
- November 22- Board Meeting; Tanasi Grill, 8:00 am. All members welcome.
- December 4- Toys for Tots Presentation; Community Church

Toys-for-Tots

Tom Ringenbach

I have observed that there are two kinds of toy-making groups/individuals in our club. The first kind started work in early summer and have their projects done or nearly done already. The second kind (including me) is sweating it out right now, having just realized that our chosen toy has a lot more parts to it than we first realized. For the latter group especially (and the former group too), Ken Harvey has provided a couple of links to YouTube videos of past Toys-for-Tots programs. Enjoy, and be inspired!

https://www.youtube.com/watch?v=BWp2-yWQVml&feature=em-upload_owner

<https://www.youtube.com/watch?v=bMqXnhIMmCU>

In Memoriam

Don Larson

Don will be missed by all.
May he rest in Peace.

Board Meeting Highlights - 10/25/2014

Board met on 10/25 at Tanasi. Fifteen members present.

Treasurer's Report: The Club currently has \$2173.93 in its General Fund.

Lloyd Donnelly has received positive responses from several schools regarding the Club's offer of free wood which the Club cannot use.

Board Highlights (Con't)

The Board voted to eliminate woodworking links from the Club website, noting that many no longer exist or are outdated. Links will be maintained in the Club Resource Book.

Following discussion of publicity for the Club, the Secretary will contact The Connection and the POA about posting regular meeting notices in their publications.

Following a request by a member to notify members of a fund raiser for the Provision CARE Foundation (Proton Cancer Treatment), the Board approved a motion allowing email news notification to members for nonprofit organizations only, whose purposes have broad appeal to the membership. Each such request must be approved by the Board.

Members who purchased unusable wood, as a result of being badly stressed or checked, at the 9/2 wood sale, should contact Lloyd Donnelly for a voucher good at a future wood sale.

New Member - October

Gary Adami

Welcome to the Club!

Help Wanted: Assistant Editor

We are looking for a member who attends most of the Club's regular monthly meetings, and who is willing to take photos of the program, Show and Tell, and any other newsworthy events at each meeting. A few pertinent notes about the event also will help this editor write up a report for the Newsletter. If you can help out, give Tom Ringenbach a call at 458-0915. Thanks!

Donations Needed

Lloyd Donnelly, in an earlier email to the membership, documented the great work our members are performing on behalf of many community organizations.

There are two organizations that can use our help right now. Please consider donating an item made in your shop (or any other item) for auction to benefit either of the following, as you may choose:

**Monroe County Court Appointed
Special Advocate (CASA)**

Smokey Mountain Service Dogs

Contact Lloyd for more information.

October Shop and Project Tour

Our latest shop tour held last month was a bit different, in that the tour included a completed home project, as well as shop tours. Each of the visits delivered with great workmanship and innovation.



Dave Breen demonstrates his air powered method for moving machinery around his shop.

Tour (Con't)

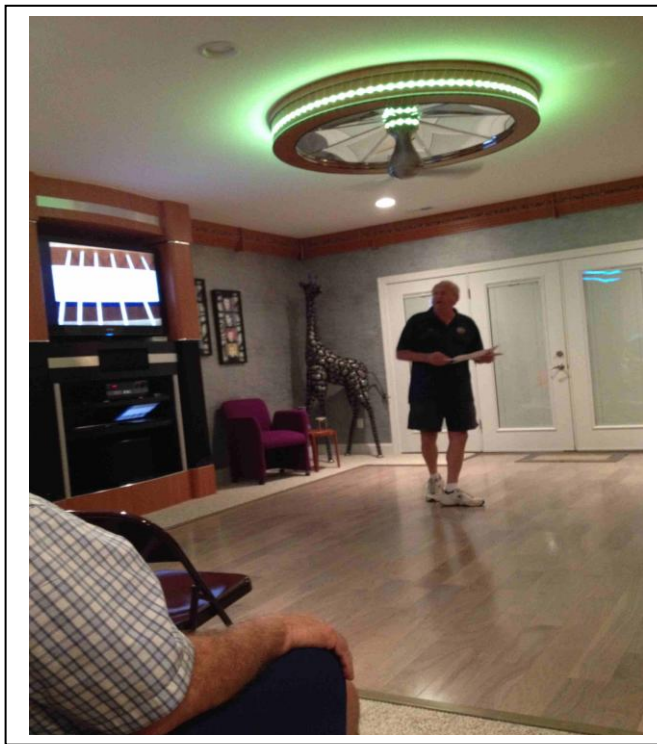


Members got to inspect a beautiful table under construction by Dennis Stanczuk while visiting his shop.

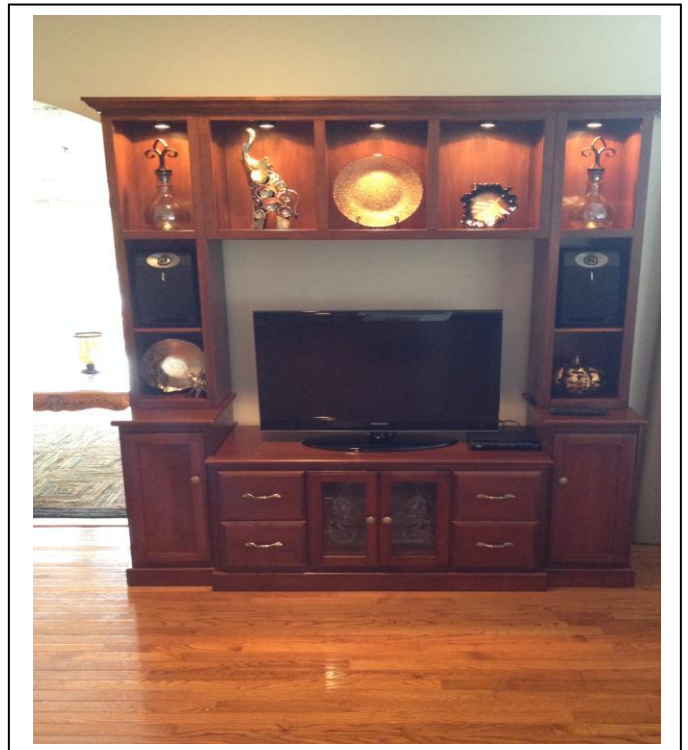


Members are attentive to the meeting, after having inspected the bar area constructed by Mark.

From Our Members' Shops



President Tom Borloglou conducts the business meeting from the dance floor in Mark Gregory's recreation room. Mark's handiwork is also reflected in the entertainment center (rear) and ceiling light.



Bill Rowe completed this beautiful entertainment center for a Village resident in response to a public service request.

Tools and Tips

All About Try Squares

Popular Woodworking

One of my favorite parts of our now-retired publication, *Woodworking Magazine*, was the back cover. Each issue featured a handy, illustrated guide to something every woodworker should know - and about which some woodworkers are too proud to ask. The following post on try squares is a perfect example.

We are releasing the new "Woodworking Magazine Compilation" - all 16 issues on a disc. [Buy your copy now!](#)

-Dan Farnbach

Handy Sizes of Try Squares You Should Own

3" square. Useful for checking small joints and plane irons.

6" or 8" try square. The 6" is ideal for smaller projects; the 8" is nice for large cabinets. This square marks out joints and crosscuts and tests the results of your cuts.

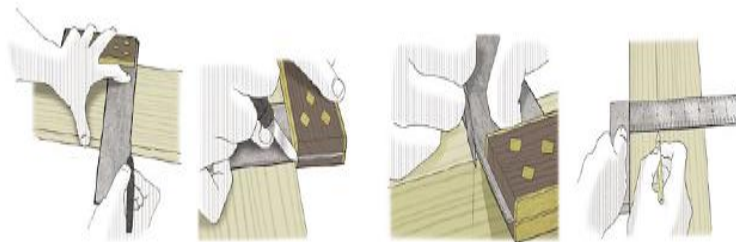
24" wooden square. A shop-made square in this size will handle almost all your large-scale cabinetry layout chores.

10" miter square. Miter squares are sized by the overall length of the tongue. The 10" size is typical; smaller ones are nice for building jewelry boxes.

Test Your Try Square

1. Place stock firmly against a board with a reliable straight edge.
2. Carefully and slowly scribe a thin knife line along tongue of the try square.
3. Flip square over and compare the same edge of the tongue to the line. If they match up, your square is true.
4. If they don't match up, scribe a second line that touches the first line at one point.
5. Set a T-bevel to one-half the angle of the intersecting lines. Scribe this angle on your tongue and remove the material with a file.

Use Try Squares Properly



Always hold the stock against the jointed edge of your work. Holding it on the far edge of your work reduces the tendency for the square to shift during marking.

When knifing a line, begin by nicking the corner of your work deeply and then draw the knife slowly and surely against the tongue. Several light passes are better than one heavy pass.

When marking around a corner, drop your knife into the nick you made on the corner, then slide the square up to the knife and make your mark.

If your square has graduations on its tongue, they are convenient for scribing a line parallel to an edge in coarse work.

[Visit the blog version of this post](#) for an additional diagram. [Buy the "Woodworking Magazine Compilation" for all 16 issues!](#)