



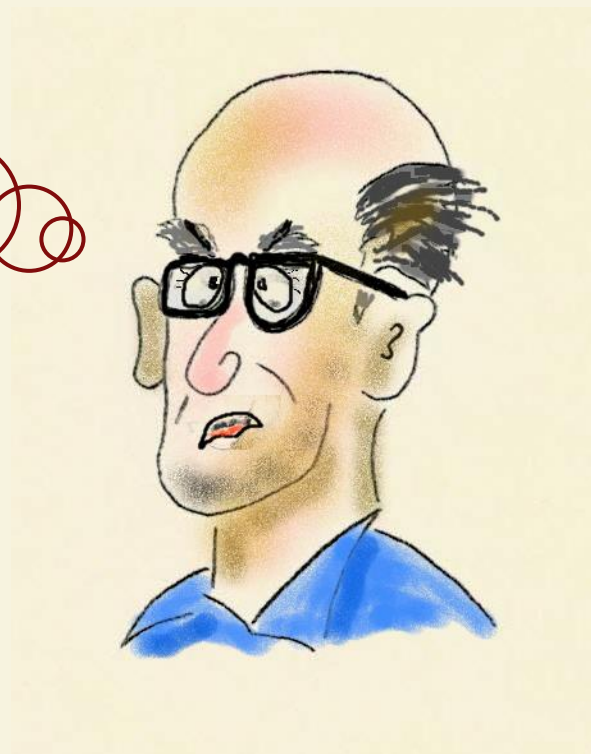
The Somewhat Strange Language of Woodworkers

I overheard these
woodworkers talking.
What a strange conversation!



This one guy asked the other if he would cut a rabbit on the end of a board. Can you imagine?





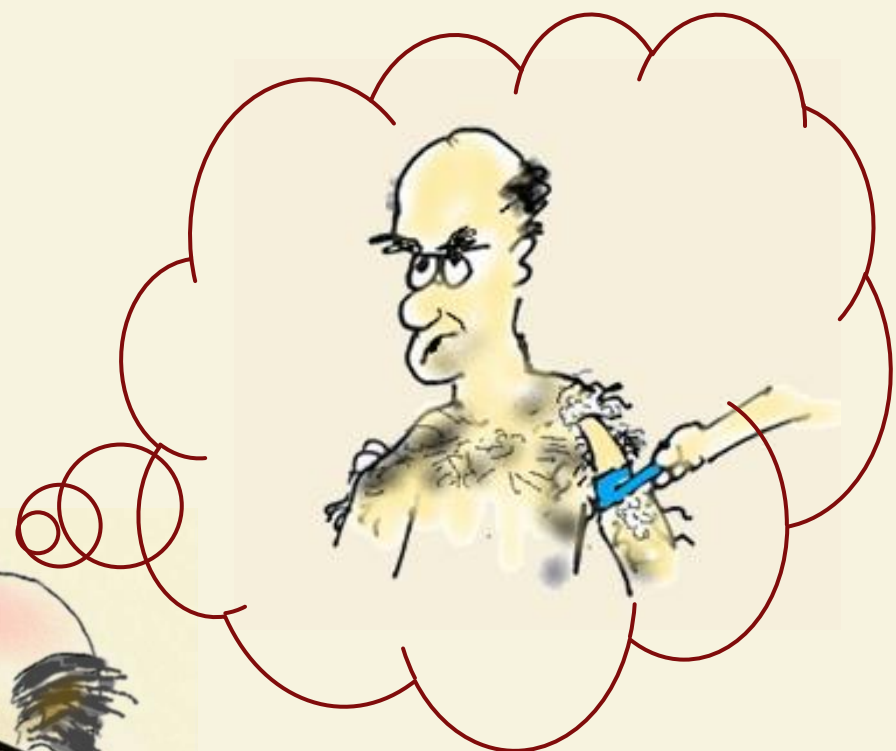
Then they talked about
joining boards with
biscuits!



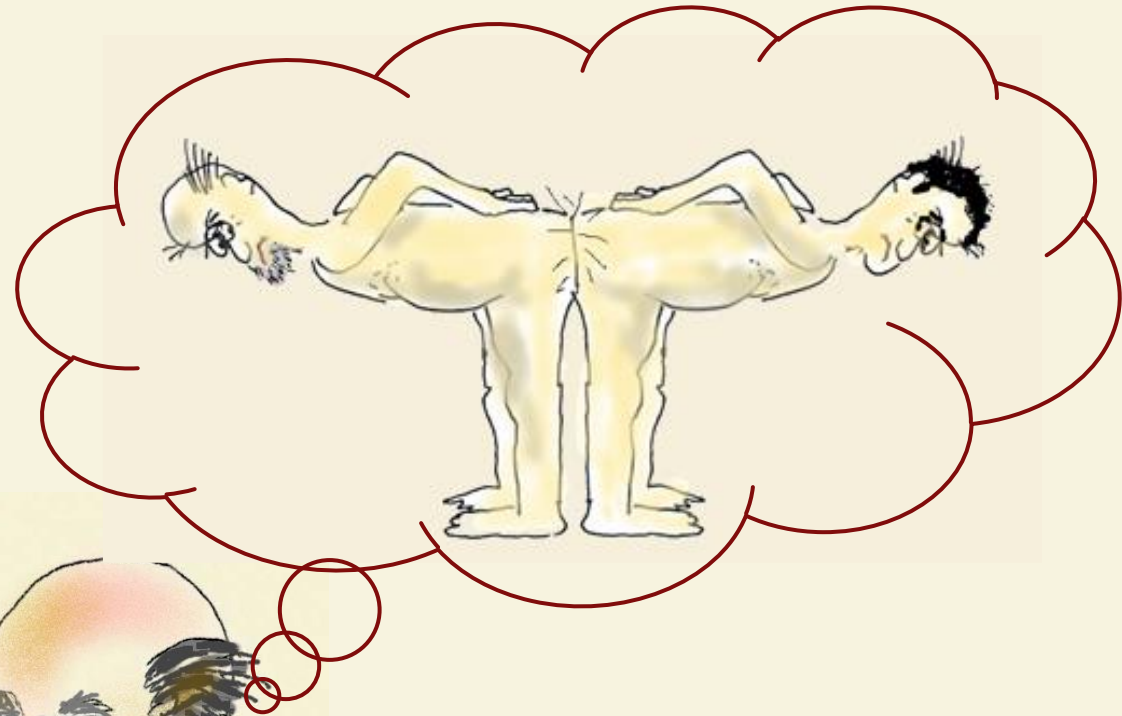
That was strange, but it got even stranger. They said they had to shave the cheeks of someone named Tenon.



After that he
needed to save his
shoulders!!!!



Next it got really
bizarre, they
started to talk
about butt joints!



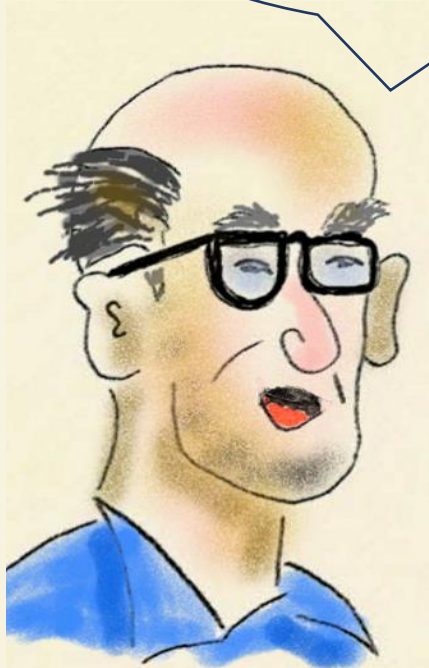


I don't understand why they keep mentioning body parts like, lips, elbows, shoulders, cheeks and even crotches. Really "CROTCHES"???

Not just body parts,
one mentioned
taking a frog out of
a plane. Just
weird!

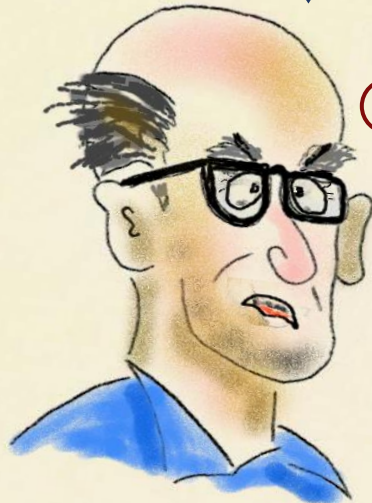


But, you know those
woodworkers are real cool
cats .. They were gluing
and talking about **pot** life.

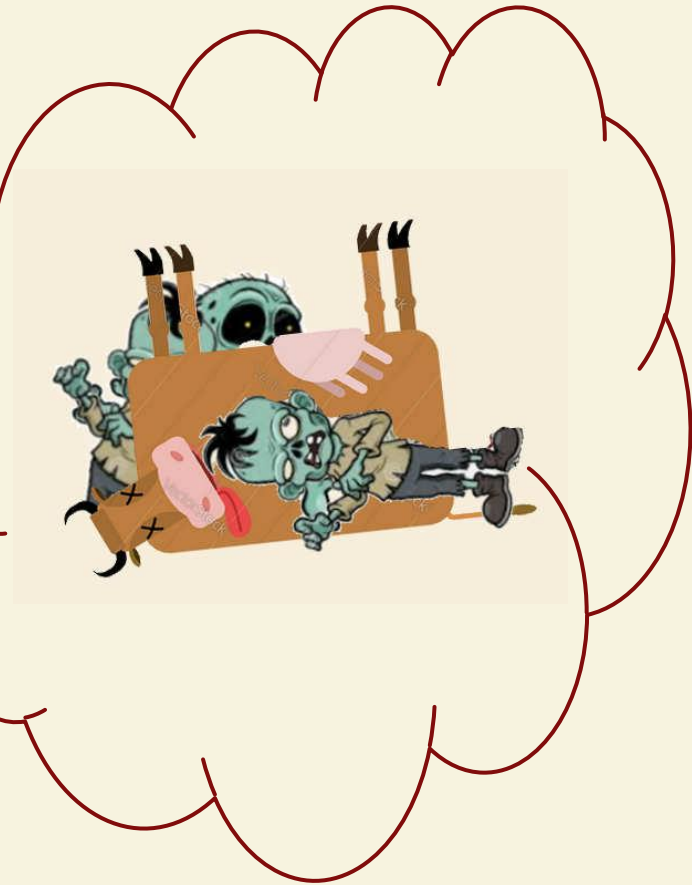


Then it got bizarre again.

It started with something about a dove with a tail, and then a BLIND dove with a tail.



Well is just gets worse
at the end of their
conversation they talked
about moving carcasses to
Our Place?



So what are: (hands up)

Snipe: A made up bird that you're friends trick you into searching for.?

Shooting Board: A board you must stand behind at a rifle range?

Scarf Joint: Something to keep a doobie warm?

Scorp: A nickname for a desert insect with claws and stinger?

The Correct Answers

Snipe: A slight concave that can occur on the ends of boards during milling

Shooting Board: A straight piece of wood used as a guide for planing or cutting

Scarf Joint: An angled joint used to join wood end to end

Scorp: Drawknife with a curved blade used for hollowing bowls and chair seats

The Correct Answers

Rake: A tool to gather up leaves that litter you're yard?

Rack: What most babes and bucks have?

Pilaster: What a politician does?

Pawl: A back country father?

So what are: (hands up)

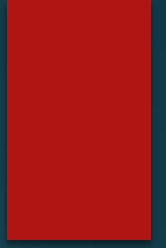
Rake: The angle of a cutting surface relative to the center line of the tool

Rack: A twisting action of a frame that can loosen joints

Pilaster: A flat, pillar-shaped detail added to the upper portion of furniture for decoration

Pawl: The toothed component in a ratchet or a table saw's antikickback device

The Correct Answers



Groove: What a hippy is always seeking?

Crowning: What a mid-wife sees?

Cupping: The opposite of spooning?

Lap Joint: A zipper?

So what are: (hands up)

Groove: A rectangular groove cut with the garin

Crowning: A deformed condition in lumber in which the edges bend away from the center, resulting in a convex shape

Cupping: A deformed condition in lumber in which the edges bend away from the center, resulting in a concave shape

Lap Joint: This joint adds strength to a frame corner. The corner lap (also called an end lap) is better than a reinforced (dowels or splines) butt joint, but weaker than mortise-and-tenon joinery. It can be at the corner (called an end lap), in the middle of one piece (called a Tlap) or in the middle of two pieces (called an X-lap).

The Correct Answers

Gingerbread: Yummy good bread?

Fret Saw: Something you've seen that you worry about?

Fishtail: The thing at the opposite end of a fish head?

Dado: An extinct large bird?

So what are: (hands up)

Gingerbread: Intricate decorative patterns cut from flat stock with a fret saw or scroll saw; often called fretwork

Fret Saw: A thin-bladed cutting tool similar to a coping saw but with a deeper frame; used to make the same types of cuts as a powered scroll saw
A thin slice of wood shaved or peeled from a log, most often made into veneer

Fishtail: A type of chisel used in wood carving, named for the shape of its blade

Dado: A rectangular groove cut across the grain

So what are: (hands up)

Neanderthal a.k.a. galoot: A big ugly person?

Cope: To make do?

Cleat: What's on the bottom of a football shoe?

The Correct Answers

Neanderthal a.k.a. galoot: Slang for a woodworker who prefers hand tools to power tools, occasionally to the exclusion of power tools from their shops altogether. In general, their media hero is Roy Underhill (sometimes called “St. Roy”), the host of PBS’s “The Woodwright’s Shop.” .

Cope: To cut a piece of wood so that it exactly matches the profile of another workpiece

Cleat: A strip of wood or other material used to support or reinforce the surface to which it is attached

So what are: (hands up)

Caul: What you do when using a hollering horn?

Dog: What “Smokey the blue tic hound” is?

Backsaw: A saw used by a surgeon?

The Correct Answers

Caul: A piece of material, often scrap wood, placed between clamp and workpiece to provide even clamping pressure and prevent marring of the surface

Dog: A round or square peg fitted to matching holes in a workbench surface; used as a stop to hold a workpiece in place

Backsaw: Handsaw with a thin rectangular blade that is stiffened with a reinforcing spine along its length on the side opposite the teeth; used primarily for mitering and cutting dovetails

So what are: (hands up)

Mullion: A number between a thousand and a million?

Mutin: A type of sheep?

Gusset: A piece of under-clothing worn by women in the 1800's?

Normite: An “average or normal” bug that eats the wood in your home?

The Correct Answers

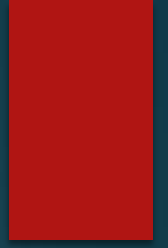
Mullion: A center stile that separates panes or panels inside a frame

Mutin: A strip that separates panes of glass in a sash

Gusset: A a triangular block to strengthen the joining of two members assembled at an angle

Normite: A slang term used primarily by Neanderthals to describe woodworkers who use only power tools. “Normite” refers to Norm Abram, the host of the popular PBS program “The New Yankee Workshop.” Abram is know for his affection for power tools, though Neanderthals have noted (and secretly been thrilled by) later episodes that show Abram using hand tools in his work.

So what are: (hands up)



Flicht: What you do when you hear a loud unexpected noise?

Dwang: An style of speech?

Deadman: What you find in a morge?

The Correct Answers

Fitch: One-quarter of a log; also thin, flat-sawn sheet veneer gathered in the order sliced from a log

Dwang: A short horizontal piece of timber fixed between floor/ceiling joists or uprights on a stud partition to stiffen structure.

Deadman: A bench accessory that assists with supporting long boards that are clamped in the workbench's face vise. The accessory, usually called a deadman, slides on a track parallel to the front edge of the workbench and it is drilled with a series of holes that accept pegs. The pegs can be moved up or down to support boards of various widths. And the deadman can be slid to accommodate different lengths.

That's all Folks!



kalitak