



Volume 28 No. 11-12

November-December 2024

President – Nancy Kessler

Vice President – Steve Bolton

VP Wood Operations – Vince Evans

Secretary – Aaron Cox

Treasurer – Jack Ernst

Editor:

Glenn Nief

Email: Glenn@TreeToBox.com

Co-Editor:

Jerry Noeth

Email: jerryn161@comcast.net

Photographer: Ben Lapointe

Email: benclapointe@gmail.com

Website: www.tvwoodworkers.com

Club email: tvwoodworkers@gmail.com

January 7	General Meeting	Yacht Club	7:00 PM	Quick Tips
January 23	Business Meeting	Little Italy	8:15 AM	All Members welcome
February 4	General Meeting	Yacht Club	7:00 PM	Pattern Making

Business Meeting Highlights

Service Projects:

- Don Naylor is heading up to build 200 – 220 tee markers for Tanasi golf course.
- Tom Ringenbach is heading up a team to build 12 trail map frames for WATeR.
- Star Riding Stables requested a donor recognition board. Steve Bolton to get info..

Ramp Build: 1 ramp build was completed in November.

Treasurer: Current balance is \$20611

- Motion passed to end funds in 2025 from Stay In Tellico for ramp builds.

Wood Operations: Vince Evans

- Security system up and running
- Kahite homeowner has donated approx. 30 red and white oak logs
- Picked up 3 walnut logs from an individual in Philadelphia
- (5–6) cherry logs will be available to pick up after the first of the year

Programs: February – Gary Martin will give a presentation on pattern Making

Membership: 302

Mentoring: Bruce Barbre needs one mentor for picture frames, one for shadow boxes.

New Villagers: Discussions continue about the necessity of attending each meeting..

HAPPY NEW YEAR

November Presentation

How to make Faux Burls - Dick Hoffmann

Dick knew someone who was transporting a desk and credenza with burl tops. The items slid out of the truck and hit the road, scratching the burl tops. Replacing the tops would have cost more than \$1K, so Dick was asked if he could repair the tops.

The burl top was $\frac{1}{8}$ inch thick, so some scratches could be sanded out, but others were too deep, so Dick set out to see how to repair the damaged areas with fake burl. He was able to find and reproduce several methods for making faux burl. He was able to repair the damaged items and has since produced other items using these methods. In the picture below, the box on the left is real burl and the one on the right is faux burl. As you can see, the reproduction looks very good.

Dick then explained methods for making faux Knotty Burl, faux Tiger Wood Burl and faux Mappa Burl. He then did a live demonstration of the Tigerwood and Mappa Burls. His presentation with the recorded demo is available on the clubs website.

(<https://www.youtube.com/watch?v=lvXeNcKzTWc>)

[LINK TO Meeting video on YouTube](https://www.youtube.com/watch?v=lvXeNcKzTWc)



Examples

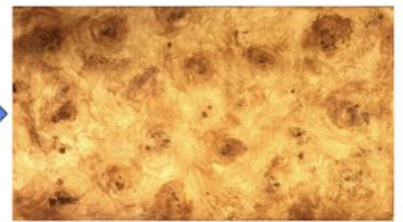
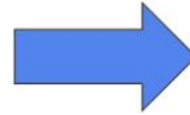


What you will Need

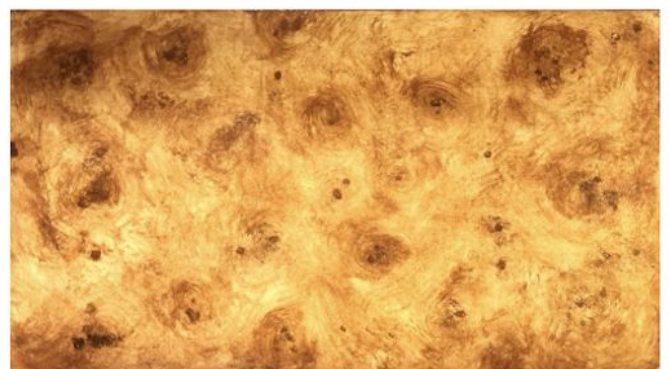
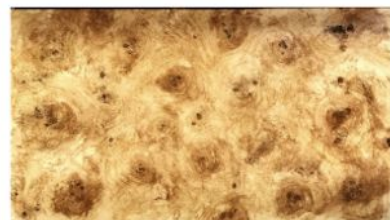
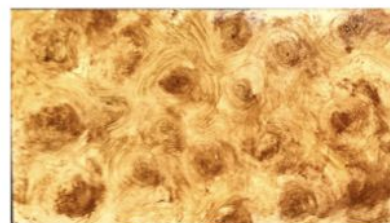
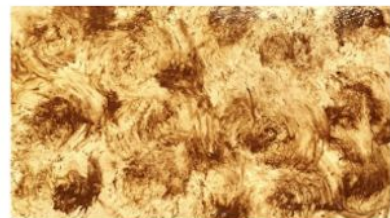
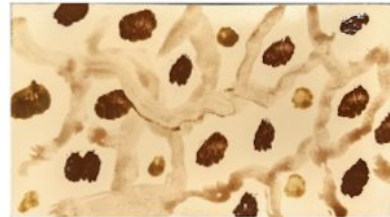
- Any smooth surface
 - Masonite
 - Plywood
 - Wood
 - Paper/Cardboard
- Burnt Orange Latex Paint
- Spray Shellac
- Oil based stain
 - Light shade
 - Medium shade
 - Dark shade
- Mineral spirits
- Thin plastic bag
- 2 clean small rags (10"x6")
- Japan dry (accelerates drying of oil based products)
- Brushes
 - 2-3 sizes of round stencil brushes
 - 2-3 sizes of chip brush (natural china bristles)
 - Soft round brush
 - 2 small artist brush (round or flat)
 - 3-4" soft flat (flogger)
 - 1" graining brush
- Rags + $\frac{1}{2}$ " dowel rod
- Sponge (with large holes –natural if available)

Making a knotty burl

- Dick Hoffmann



- Cover surface with burnt orange latex
- Slip coat it with spray Shellac
- Shellac keeps latex from absorbing the stain
- Paint dots of non-overlapping different color oil stains
- Paint mineral spirits between dots.
- Crumple thin plastic bag and stamp with twisting motion.
- Tilt board back and forward to get colors to run just a little
- Use stencil brush to add knots with twist in darker areas
- Use small chip brush to paint grain around knots
- Soften the grain by tapping areas with tip of round soft brush add small dots
- Lock with spray shellac
- Cover with one of the stain colors
- Wipe off most of the color
- Smooth color to be even without lines
- Lock with spray shellac



Able Trade Tour 11/4 - Spencer Ratliff

All who went had a great time.

Members attended a tour of Able Trade November 4th. They have a workspace and large tools for subscribers' use. It has a variety of tools for working wood and metal as well as studios for dedicated craftspeople.

Able Trade is a 17,000 square foot space in Old City, Knoxville..Address: 203 W. Jackson Ave. Knoxville, TN 37902. The entrance is on the far LEFT end of the Jackson Terminal building at the base of the colorful stairs that come down from the Gay St. viaduct.

Thanks to Ned Miller Program Committee
and Nancy Kessler On site Coordinator

FYI Instagram post by Melody Ratliff "For any of you who want to geek out over woodworking equipment, join our founder Spencer as he walks you through each item in the woodshop!"

[Able Trade posted this video tour on instagram.](#)

[Very impressive Video tour of Able Trade woodshop](#)



Volunteers needed

Wood Cutting:

Volunteers will be given (1) chit per shift worked. 2 chits are required to get priority purchasing of a board. The sequence of purchasing boards is as follows: After the first show and tell pick: Round One: chits select first, then everyone else will select. Round Two: all will select according to number.

Requests for Additional help - **Contact Bob Brown xxpat@charter.net**

Historic TVWC documents/items volunteer request

The club is revising the role and activities of the club historian, and is looking for volunteers to assist in converting archived print materials to digital media. If you have access to a scanner and are available to help us digitize our historical records,

Contact Ben La Pointe, benclapointe@gmail.com

Meeting Programs:

Requests for future program ideas - *Neil Wilson*

At every meeting we try and have a guest speaker, or member participation event. If anyone has a program idea, or wants to provide a certain woodworking experience you have, **Contact Neil Wilson crawil@charter.net**

Meeting Programs:

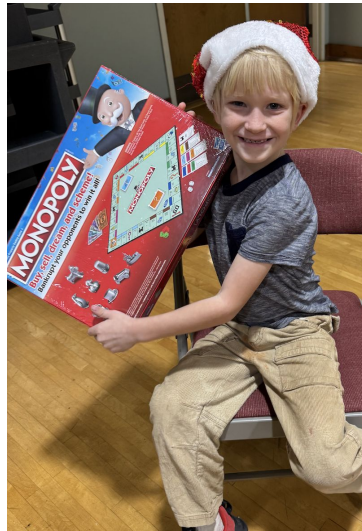
Ned Miller is looking to add another member to the committee, especially someone who has contacts in the community and can suggest potential presenters. **Contact Ned Miller tennned@gmail.com**

Contract Service Requests are now available for review at any time on the TV Woodworkers Website under the Members tab / Contract Service Request Bulletin Board. **[LINK TO Contract Service Requests](#)**

Show and Tell:

All show and tell participants are entered into a raffle using the randomizer for a first board pick at a sale within a year.


December Toys for Tots




December Toys for Tots



Loudon County Sheriff Thank You

 **LOUDON COUNTY SHERIFF'S OFFICE**
ADMINISTRATION- 865-986-4823 ADMINISTRATION FAX- 865-986-3621
CORRECTIONS- 865-986-6612 CORRECTIONS FAX- 865-986-2535
RECORDS- 865-986-1770

 **Loudon County Sheriff**
Zac Frye
Chief Deputy

December 4, 2024

TO: Tellico Village Woodworkers Club
133 Saligugi Way
Loudon, TN 37774

Cash Donation: 1,000.00

Thank you for your generous donation to our Toys for Tots Fund. It's almost that time of year again and Christmas is quickly approaching. For some families Christmas is not a happy, joyful occasion because they cannot provide Christmas presents for their children. All children look forward to Santa bringing gifts. That's where you have helped the children of Loudon County.

As we gather with our family and friends during this busy holiday season and realize how blessed we are, please know that you have also blessed a child's life in Loudon County. Thank you for helping make a child's Christmas a day to remember.

Respectfully,
Amy Langley
Toys for Tots Coordinator

Boys and Girls Club - Thank You

I just wanted to reach out and thank you all again for all of your generosity, working with you all has truly been a blessing in so many ways. How you bless our members is truly inspiring. A testament to how you are impacting the kids is how you blessed Barriah. Barriah came with us to sing at the meeting Wednesday, originally when she signed up we were shocked because she tends to be on the quiet side. That being said, like the others, she showed up to practice everyday anxiously awaiting the day she could sing. As we walked into the meeting Barriah and the others were immediately amazed at all the beautiful toys on display. They asked why all the toys were there and we explained to them that your group had made a bunch of toys and got donations to help families out and provide Christmas for kids who may not get anything without it. All the kids agreed that this was a very kind act. After we sang and you all told the kids to pick out a present I saw Barriah sitting in her chair with tears streaming down her face. I asked her what was wrong and she said that it blessed her heart that there was a group of people that cared so much to help kids in need, tears of joy continued to fall as she picked her own present out. Thank you so much for your generosity, the donation you gave will be used to give something to each of our members and hopefully help those in need. Thank you for giving our members a gift and treating them to baked goods. As I watched some of your members "shop" around with our members, It blessed my heart knowing that a lot of those members don't have those experiences at home. Last but certainly not least, Thank you for your kindness. As an organization we are always trying to teach our members how to be kind and give to others, thank you for showing them what that looks like. I know I have said it alot but I truly don't think I could say thank you enough. We are grateful beyond measure for everything you have done for us.

From all of us at the Boys & Girls Clubs of the Ocoee Region-Madisonville Unit we wish you a Merry Christmas.

Jordan Campbell



Madisonville Unit



Show and Tell

Ron Cirincione

The leaf and stem are drawn full size on paper. MDF patterns of the right and left halves of just the leaf are made using the bandsaw and sander. Boards of contrasting color, maple and cherry for example, are stacked and cut to rough shape on the bandsaw using the paper pattern as a guide. The curves of these boards are then cut to exact shape using the MDF pattern and a bearing guided router bit. Alternate color halves are then glued together creating a leaf of two colors.



The process is then repeated using a second pair of MDF patterns to create the stem effect. The right pattern includes the right half of the leaf and the alternate color stem; the left pattern just the left half of the leaf. Once re-glued, using alternating boards, you have a dark leaf with a light stem and a light leaf with a dark stem. Surface sand the boards. Then cut, sand and round the outer curves of the leaves and protruding stem. Add feet and seal with mineral oil.

Randy Schwerdt

I usually make small cars of different styles annually for Toys for Tots.

I saw a small duck on wheels in a gift shop and thought I would change it up this year and do animals. With the help of my daughter, we came up with seven different silhouettes for this year's project. The larger kinds of animals, (elephant, hippo, pig and whale) were made out of cherry. The smaller ones (duck, rabbit and squirrel) are made out of hackberry. The wheels are premade maple and everything was finished with a child safe mixture of mineral oil and beeswax.



Randy Schwerdt

This baby doll cradle is the second one I've made and will be given to our second granddaughter.

The first one was made several years ago so I had to go digging through my unorganized collection of past creations to find the plans I had drawn up. This one is very similar with only a few minor changes. Just so the girls can tell them apart, I made this one out of walnut as the first one was made with cherry. The finish is Minwax polyurethane warm satin spray.



Show and Tell

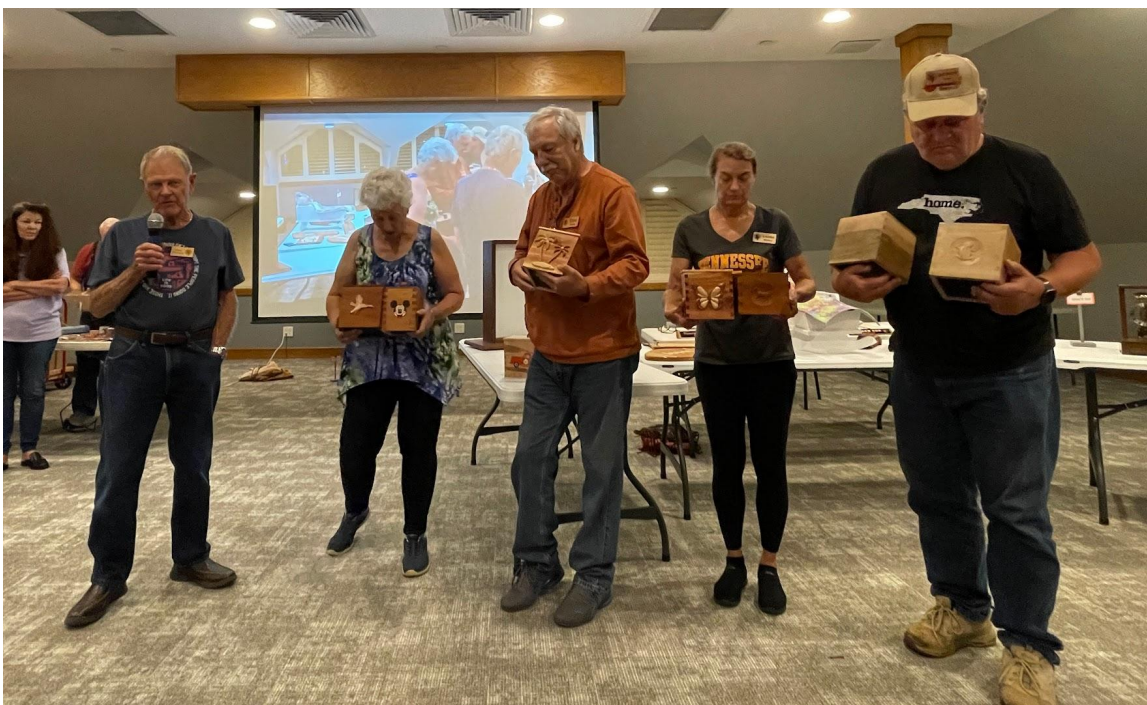
Barry Brandt

I wanted to make a lidded bowl for a charity and couldn't think of a better cause than the Beads of Courage program. Found a segmented bowl in a turning book that I liked and followed the design for its "featured ring". The challenge was to calculate and adjust all the dimensions of the segmented pieces to meet the size requirements for Beads of Courage bowls. Hopefully, one of the many courageous kids will enjoy this bowl that was made from walnut and poplar woods. The finish is satin CrystaLac polyurethane.



Kathy Ruzic, Jerry Coy and Don Naylor

We were all thrilled to be part of the Beads of Courages Box program. Dave Brunson was the best teacher. He led our merry group. Tom Borloglou was Dave's helper. We could not have done it without their help. Dave was extremely generous with his time and ideas. We used different woods such as maple, cedar and walnut. All of our boxes were different sizes. We did not make it easy for Dave and Tom. Dave let us use our imagination. An incredible amount was learned using tools that Dave created himself. We were indeed very fortunate to have both Dave and Tom in charge of our group. I am not surprised, given the wonderful talent and time that so many woodworkers give to the community. I can safely say that there cannot be any other club in Tellico Village that has such a generous group of individuals with such big hearts (and lots of patience).



Show and Tell

Bill Nance

I turned several of the suspended tripod bowls as a way to do something different from normal bowls, natural edge pieces, or whatever. The key to the design is to start with an absolutely precise equilateral triangle, identical lengths within a millimeter on each edge, and a perfectly centered mounting bore. I use a drive screw mounted in a chuck. The bottom gets turned first to define the legs and underside profile; it is not uncommon to snap off the tips of the legs as they get smaller. Once those are done, the workpiece is reversed and the outer corners are turned to smooth the convex tops of the legs. Finally, the center is hollowed out like any typical bowl cavity. The piece cannot be sanded easily on the lathe, so it requires a lot of hand sanding after removal from the lathe. They are fun and challenging, but failures are also common.



Aquarium Marty Shoffner



Toy



Show and Tell

Jim Kurowski

This is my interpretation of an English skeleton clock I saw in a book, soon after I was first married (we just celebrated our 50th). The original was Rosewood, but mine is Black Walnut. I got the movement a few years before I moved to Tellico Village in 2017, but found out only after I drew a set of plans, and built the piece, the Hermle movement was no longer available to build another. There is nothing remarkable about the construction, that consists mainly of 1/8" x 1/8" stopped dados, that tests one's ability to measure and cut very accurately. I learned that INCRA rules and INCRA fences were my friends. It is finished in Baisakhi dark shellac over bare wood.



Marie McClendon

Turning 101 has been a great experience for a beginner, if there is a category below beginner I qualify. I signed up for the class not knowing anything and not expecting to make something I would be proud of. I couldn't have made the box without Bob Brown's patience, advice, and finally saying the carbide scraper (the only tool I wasn't totally afraid of) would get me through. It might have taken us three weeks to get it done, but the segmented box turned out so much better than I could have imagined. Bob taught me how to measure and cut the segments, glue them together (with dryer ring clamps), reglue them when they come apart, take the segments and rings apart when I miscounted, turn the box, and then fix all the remaining mistakes. I also learned there are times when the almost finished box should not be put back on the lathe at a really high speed. Like I previously stated, Bob spent a lot of time helping to overcome my lack of skill and knowledge. The box was made for Beads of Courage of walnut and hackberry and finished with carbona wax.



Show and Tell

Gary Martin

The foundry pattern and bronze casting from which it was made was a commissioned job from an historic Coast Guard Station in the Upper Peninsula of Michigan.

The initial challenge was to make a pattern for the missing bracket to hang the bell ONLY from an small old photograph with a Coast Guardsman standing next to the bell hanging from a bracket on a post.

I asked for some dimensions and a template of the outside shape of the bell to give me more perspective on the size and shape of the bracket required.

The pattern was made in two halves, doweled together as common foundry practice from Sugar Pine. It grows in abundance from the southern Oregon clear down to Baja California. It is the largest of all pine trees with the largest pine cones up to 2 feet long. It is not uncommon to grow 5-10 feet in diameter and up to 200 feet tall.

Sugar Pine is an ideal pattern makers wood as its properties are: easy to turn on the lathe, stable, takes glue well, easy to carve and sand, and is available almost knot free. Since this was a very low run pattern, it was just finished 3-4 coats of very high quality sanding sealer.



In Memory

In case you missed the Obituary in The Connection, long time TVWW Club member John Theobald recently died. The obit is a wonderful tribute to this great guy.

Services were held, Sunday, 10/7/24.

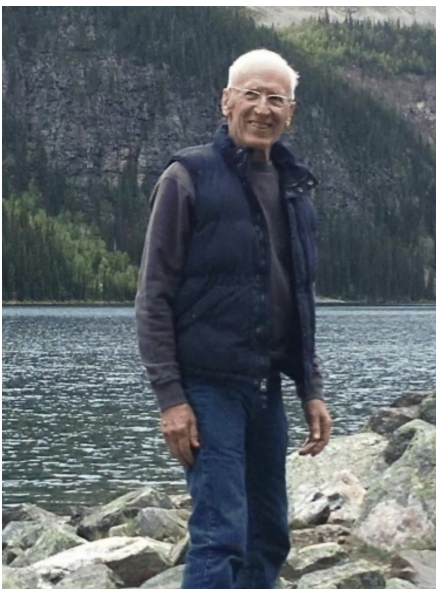
[Obituary](#)

Personally, I really enjoyed John. He appeared to always be happy and upbeat. He served for awhile on the Club's Program Committee and was always ready to lend a helping hand.

He will be missed.

Ned Miller

Program Committee



John Theobald