



Volume 30 No. 2 & 3

February and March 2026

**President – Randy Neuhaus Vice President – John Miranda**  
**VP Wood Operations – Larry Gardner**  
**Secretary – Sue Moloney Treasurer – Tom Wiggins**

**Editor: Glenn Nief Email: Glenn@TreeToBox.com**  
**Co-Editor: Jerry Noeth Email: jerryn161@comcast.net**  
**Photographer: Ben Lapointe Email: benclapointe@gmail.com**

**Website: [www.tvwoodworkers.com](http://www.tvwoodworkers.com) Club email: tvwoodworkers@gmail.com**

**Apr 7 General Meeting Yacht Club 7:00 PM Making a table Presentation**  
**Apr 25 Business Meeting Little Italy 8:15 AM All Members welcome**

**Spring Challenge June Mtg - Beads of Courage box/bowl and/or noise maker**

**Welcome to our new Officers**

• Service runs from April 1, 2026 - March 31, 2027

**President - Randy Neuhaus**  
**Vice President - John Miranda**  
**Wood Ops VP - Larry Gardner**  
**Treasurer - Tom Wiggins**  
**Secretary - Sue Moloney**

**SUMMARY: March 28, 2026 Business meeting**

**Membership** - 29 new members so far this year

**Treasurer** - The club has a balance of \$25,958.

**Wood Operations** - wood cutting is scheduled for Tuesday, April 7

**Mentoring** - Thanks to Nancy for coordinating mentoring this last year

**Community Service Projects** - • Tanasi tee markers • Ladies Golf League

• Our Place • Memory Day Care Center • STAR • Boys and Girls club

**Club tools** - Keeper needed for Plunge router & Finish sprayer

**Programs** • Always appreciated, help finding presenters for meetings.

**Orientation Sessions** • 12 new members attended

**Miscellaneous** • Suggestion for meetings to start at 6:30 rather than 7:00 pm.

# February Shop tour

## Gary Martin - Martin Model & Pattern

### The Story of Martin Model & Pattern: From High School to Disneyland

#### A Journey of Craftsmanship

My journey began with a single challenge from my high school student teacher, Ed Beacham: build a Steeple Clock case. That project won me "Industrial Student of the Year," landed my photo in the paper, and brought in my very first customers. Inspired by Ed, I eventually became an Industrial Arts teacher myself, and together we started a hand-carved sign business.

#### Mastering the Scale of Industry

Since those early days, my shop has evolved into a hub for massive, high-precision industrial work. We've tackled everything from **Disneyland steam engine cylinders** to 15-foot-tall turnings and complex multi-stage pumps that require months of teamwork to complete.

#### Tools & Philosophy

I'm a firm believer in the "old school" foundations I learned in the 60s. My secret to success? **Buy the best used cast iron machines you can find** and master high-quality hand tools—spokeshave, draw knives, and trammel points—to reach the heights of your skill.

#### Inspiring New Makers

Today, I'm passionate about helping students with zero experience build ambitious projects like full-sized dining room tables. It's been a joy to see a new generation—including many women who now make up two-thirds of my classes—discover the power of making.

#### Ready to start your own masterpiece?

Whether you're a beginner or looking to refine your industrial skills, I invite you to join us in the shop. Visit our website at [martinmodel.com](http://martinmodel.com) to view our upcoming class schedule, or reach out directly at [martinmodel@comcast.net](mailto:martinmodel@comcast.net) to turn your vision into reality.

[Martinmodel.com](http://Martinmodel.com)



[Google Link To Gary Martins shop tour pictures](#)

# Wood Cutting - Feb. 23

A big thank you From Larry Gardner VP Wood Operations.

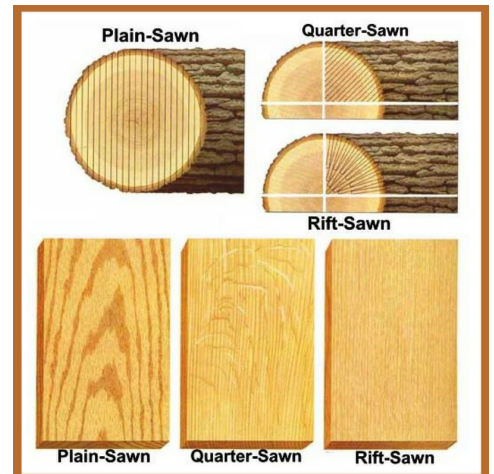
On February 23, club members worked in freezing temperatures to process **17 logs**, resulting in **1,231 board feet** of lumber.

## Key Details:

- **Current Status:** The wood is currently in the kiln and will take **4 to 5 weeks** to dry.
- **Upcoming Sale:** A wood sale will be scheduled immediately following the drying process.
- **Volunteer Opportunity:** Larry Gardner is looking for volunteers to join the **kiln monitoring team**. Training is provided for those interested in learning the technical process of managing wet and dry bulb temperatures.

## Feb 23 Cutting Results:

- **Cherry:** 5 logs (254 BF)
- **Hickory:** 1 log (131 BF)
- **Walnut:** 3 logs (140 BF)
- **Beech:** 2 logs (358 BF)
- **Hackberry:** 6 logs (348 BF)
- **TOTAL:** 17 logs / 1,231 Board Feet

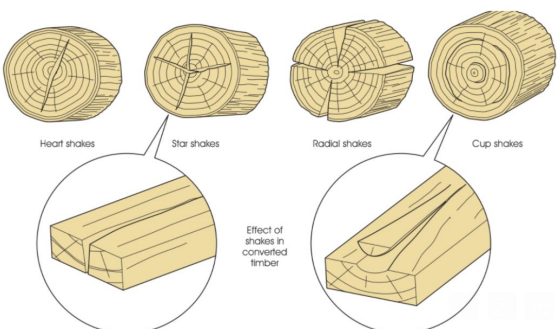


## Next Wood Cutting - April 7

A cutting is scheduled for Tuesday, April 7. It will include red and white oak.

- There is still a plan to cut 8/4 lumber and possibly slabs for drying during the hot summer months. Larry Gardner will be looking at the interest for slabs and quarter sawn wood from that cutting.

What is the difference between flat sawing and quarter sawing logs



**Wood Shakes** Shakes are grain separations caused by stress relief during growth, felling, or drying. Key types include:

- **Heart Shakes:** Cracks at the center, often due to over-maturity.
- **Star Shakes:** Multiple heart shakes forming a star pattern.
- **Radial Shakes:** External cracks from rapid drying or heavy impact during felling.
- **Cup/Ring Shakes:** Separations between annual rings, typically caused by poor nutrition or sap freezing in early spring.

# March Presentation of Club Tools

## Another Great Program by Ned Miller

### Tools Available to Members

As a TVWC member, you have free access to a wide variety of woodworking tools. These are categorized into three types:

- **Club-Owned Stationary Tools:** Located in "Keeper" shops; available for use on-site.
- **Club-Owned Loaner Tools:** Portable equipment you can borrow for your own shop.
- **Member-Owned Tools:** Personal tools shared by fellow members (either for loan or on-site use).

### How to Use:

Simply contact the listed "Keeper" or owner to make arrangements. Please return borrowed portable tools promptly and in good condition.

[View the Full Tool List & Contact Info](#)

[Tools Available for member use](#)

Bill Nance



Tony Grenis



Randy Neuhaus



Larry Gardner



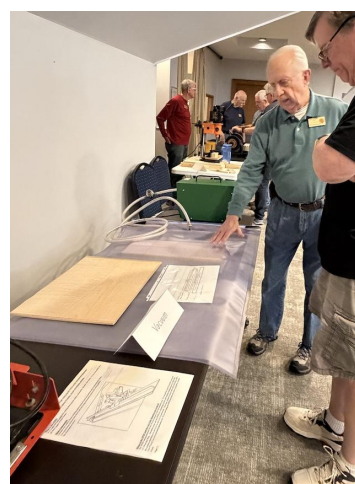
Jack Ernst



Norm Coe



Lloyd Donnelly



Dick Hoffman

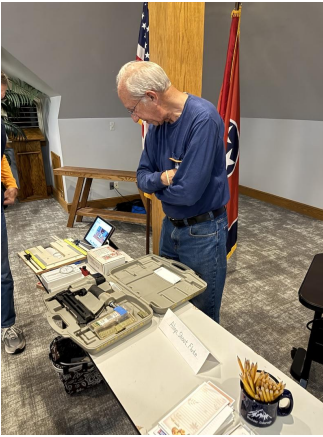


[Bessey Clamps](#)

[View the Full Tool List & Contact Info](#)

# March Presentation of Club Tools

**Ned Miller**



**John Johnson**



**Tom Ringenbach**



**Ron Ciricione**



[Rikon 10-340 Bandsaw](#)

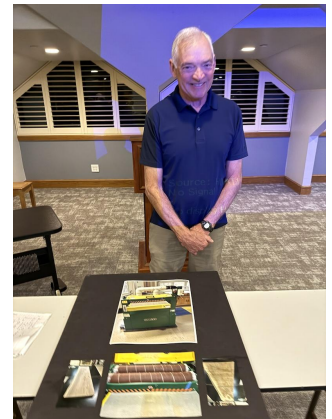
**Tom Borloglou**



## March Meeting links

- [PowerPoint-Club Tools Available to Members](#)
  - [Tool List](#)
  - [Rikon 10-340 Bandsaw](#)
  - [Powermatic Hollow Chisel Mortiser](#)
  - [Powermatic 60HH Jointer](#)
  - [Powermatic 15HH Planer](#)
  - [Bessey Clamps](#)

**Aaron Cox**



## **Thank You to Our Members**

The heart of our club has always been our shared passion for woodworking, but it's your incredible generosity that truly makes this community thrive.

We want to extend a sincere thank you to every member who has opened up their personal shop, volunteered as a "Keeper" for club equipment, or spent their time maintaining our shared tools. Your willingness to share your resources and expertise doesn't just provide us with the right gear—it builds the spirit of mentorship and support that defines the [Tellico Village Woodworkers Club](#).

Thank you for your hands-on help and for keeping our craft accessible to everyone.

[View the Full Tool List & Contact Info](#)

# March Show and Tell

## Dennis Smith



## Maple Segmented Vase

Dennis saw a guy do this on YouTube and I thought, I want to try that.

It's a stave construction with spacers in between. The angles were too tough for me to figure out, so I drew it on the computer and then used a laser engraver to cut out the templates for each segment. The large center section is seven layers deep of segmented stave. The neck is solid, and the top is a separate segmented bowl that I turned and then attached.

## Randy Brabant



## Two intricate scroll saw patterns

Working with cherry wood can be a double-edged sword—it's beautiful, but it's notorious for scorching. Cherry is a dense wood that "burns" easily if the blade speed or type isn't exactly right. He suggests applying blue painter's tape directly onto the wood before cutting. This acts as a lubricant for the blade and significantly reduces friction-induced burning. For these types of intricate, circular, and geometric motifs, Bob recommends using a "skip tooth blade" to help clear sawdust and keep the cutting surface cool.

## Gary Martin



## White Oak Console Table

Gary recently completed a beautiful White Oak console table, a charity project for a member of his church who needed a place to display four generations of family photos.

The piece was inspired by a minimalist, "IKEA-style" photo provided by the client, but upgraded with heirloom-quality materials. The legs are seamlessly half-lapped into the frame. Biscuit Joints: Used throughout the build to fasten the primary sections securely. To handle the tricky angles of the legs, Gary created a custom wooden block to hold the pieces at the perfect orientation while driving the screws.

# Tellico Woodworkers 2026 Spring Challenge

For our 22nd annual "Spring Challenge", **June 2 meeting** we invite club members to participate in a contest to make a **Beads of Courage box** and/or **Noise Maker**

**June 2nd meeting will feature our Spring Challenge.**

There are two options in this year's Challenge: a Beads of Courage box or something that makes a noise. This could be, for example, a musical instrument or something that just bangs or taps.

## Rules

- 1) Club members may build anything of any design.
- 2) The project is to be built primarily out of wood
- 3) Beads of Courage boxes are to follow the attached guidelines
- 4) The noise maker may make any kind of audible noise that is activated independently or with the involvement of an outside source (e.g., a person or external power)
- 5) Any other materials- other than other wood - may be incorporated into the project, e.g. metal, glass, ceramics.
- 6) The project may be finished in any manner.
- 7) Project's size is not important
- 8) More than one member may participate in building a single project.
- 9) Entry must identify the name(s) of the builder(s).
- 10) Project must be completed and brought to the **June 2** club meeting.
- 11) Contestants may enter more than one project but will be eligible for only one award.

Note: There is no need to sign up for this contest in advance.

## Judged Categories:

- 1) Best Craftsmanship
- 2) Most Unique/Creative/Entertaining (let your imagination go . . .)
- 3) Most Distinctive (eye catching, appealing. Leaves much to discretion)
- 4) Best of Show

Awards will be made in each category for both the boxes and the noise makers.

Voting by members in attendance will determine winners.

## Bead Bowl/Box Guidelines Dimensions:

Beads of Courage members may receive thousands of beads. It is desirable for your boxes to hold them all. As a result, turned or rectangular lidded boxes need to be large.

Interior for turned boxes: 6" diameter (5" min.), 5" height (4" min.)

Minimum interior for flatwork boxes: 4" long x 6" wide x 4" high. A little larger works well.

Base and lids: Box bases should be wide enough so the box is stable and does not tip over easily.

Lids for Beads of Courage boxes should be easy for small or ill children to remove or lift.

Any finials should be easy for a small child to grasp and not too elaborate so they don't break.

Design considerations: Avoid excessively elaborate designs that may easily break or be damaged;

Finishes: Bowls must be safely sealed. Please use a safe finishing process without toxic materials. Bowls that have not been properly sealed can harbor mold which is dangerous to our members with compromised immune systems.

*Do not use finishes like linseed oil or other finishes that take a long time to outgas. Refrain from painting the boxes.*

Instead, highlight the beauty of the wood with clear varnish, a stain, and/or burning.

## Beads of courage Box/Bowl examples



Link to Website

[Beads of Courage boxes and lidded bowls](#)

# Tool Sale - March 27th

On Friday, March 27, the tools and equipment of Tom Daly, a charter member of the TVWC, were sold. Tom, who was 97 at the time, wanted to see his tools find new homes within the membership.



# New member orientation

- Richard Ganch and Tom Borloglou

12 New members attended



# Sharpening training - March 23

Bill Nance, Walter Puhl and Nancy Kessler, Past President will demonstrate our techniques on sharpening. demonstrate the Club's Worksharp as well as hand sharpening.

[LINK to February Meeting on Google Drive](#)  
[LINK to March Meeting on Google Drive](#)

Anyone with the link can access the contents as a viewer.

Caution some users non-gmail accounts may require a secondary authorization by me which I will do as soon as possible. Ben LaPointe [benclapointe@gmail.com](mailto:benclapointe@gmail.com)

# Crafters Fair March 28th

The Woodworkers Club participated in the Spring Crafters Fair on March 28th. The Community Church of Tellico Village Crafters has been providing charitable donations to the local community since 1988. The Crafter's Fair is held at the Community Church Christian Life Center semiannually. Membership to the Crafters Club is open to all, not just church members. The proceeds from the fair support college scholarships to seniors from area local high schools and local charities that have been vetted by the Crafters such as Smoky Mountain Service Dogs, Child Advocacy Center, Monroe County Seniors and Friends, Friend of the Library, Good Samaritan, TV FD & First Responders along with many others. Several Club members donated items along with Scott Duncan who has participated with the Crafters during previous Fairs. Donated items included bowls, pens, cutting boards, turned trees along with many other items. Sales of the TVWC donated items generated over over \$2,000. All proceeds are returned to the local community through their donations. Thank you to everyone that participated. The Craft Fair is held in the Spring and Fall. Participation in the Fair is a good opportunity for the TVWC to receive recognition while supporting local charities. Our goal is to continue and grow our participation with the Crafters.



# Community Project

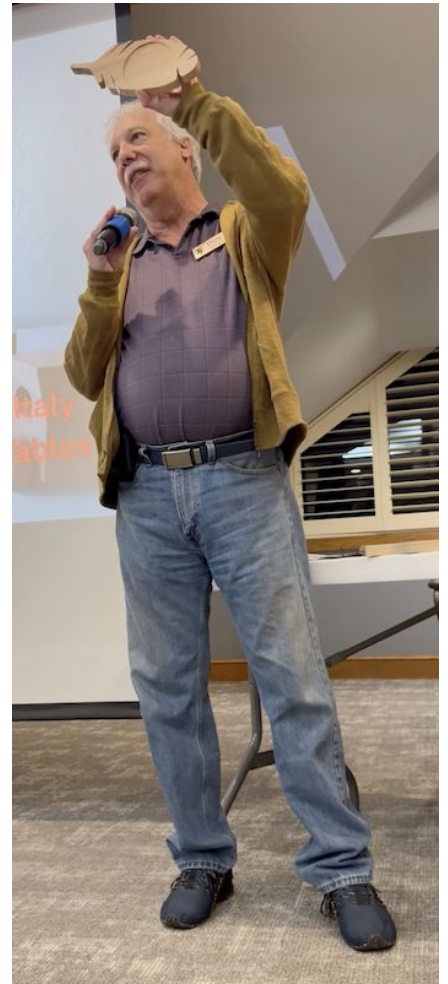
## ▪ Tanasi Golf Course Tee Markers

Thanks to Randy Neuhaus, Dennis Smith, Al Streufert, William Gulasey, Keith Terwelp, Steve Bolton, Larry Gardner and Don Naylor

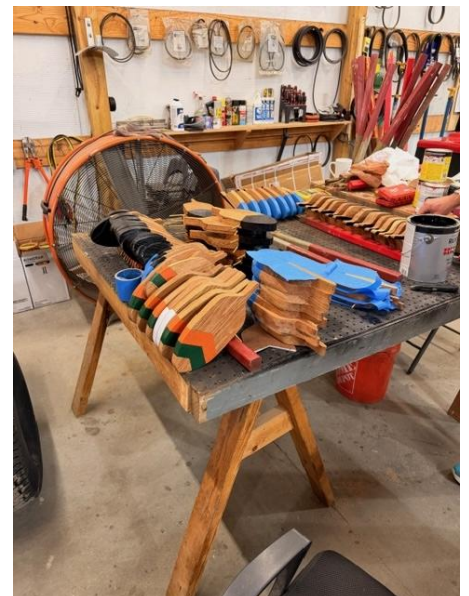
**Process & Production** The fabrication process involved planing raw boards to a consistent thickness of  $\frac{3}{4}$ " to 1" before precision-cutting the feather outlines on a bandsaw.

**Project Update:** Following a meeting with the Golf Maintenance Superintendent, we are pleased to announce that **218 tee markers** have been delivered to Tanasi. The maintenance staff is currently busy painting and varnishing the markers, and they are looking fantastic.

While our primary work is complete, we remain on standby if additional markers are needed. A huge thank you to everyone who helped "knock these out"—this is a great example of the TVWC supporting our POA and the local golf community.



**Don Naylor**



# Volunteering has many benefits, including:

**Skill Development** – Learn new woodworking techniques, refine your craft, and gain hands-on experience from seasoned woodworkers.

[Link to Technique & Skill assistance](#)

**Community Engagement** – Meet like-minded people, make new friends, and build a sense of camaraderie within your local woodworking community.

[Link to Helping our Community](#)

**Mentorship Opportunities** – Share your knowledge with beginners and learn from more experienced members, creating a supportive learning environment.

[Link to Mentoring program](#)

**Access to Tools and Equipment** – Our club has specialized tools that members can use, saving you money and space.

[Link to Tools available to members](#)

**Project Collaboration** – Work on community projects, charity builds, or group commissions that enhance your skills and contribute to good causes.

[LINK TO Contract Service Requests](#)

**Personal Fulfillment** – Giving back to the community and helping others learn a valuable skill can be incredibly rewarding.

[Link to Beads of Courage donations](#)

**Discounts and Perks** – Our club has discounts with local suppliers. One major benefit to Club members is that the club produces low cost lumber for sale to its members. The lumber is priced at a fraction of the price charged by lumber yards.

[Link to Current Kiln & Barn wood lumber status](#) [Link to Wood operations](#)

## Volunteers needed

**Wood Cutting & Sales:** Token and special sale policies under review; “Barn Sales” proposed for inventory and access.. **Contact Mark Laven [lavenmark@gmail.com](mailto:lavenmark@gmail.com)**

[Link to Log Cutting and registration](#)

**Meeting Programs:** Requests for future program ideas - *Neil Wilson*

At every meeting we try and have a guest speaker, or member participation event. If anyone has a program idea, or wants to provide a certain woodworking experience you have, **Contact Neil Wilson [crawil@charter.net](mailto:crawil@charter.net)**

**Meeting Programs:** Ned Miller is looking to add another member to the Program committee, especially someone who has contacts in the community.

**Contact Ned Miller [tenned@gmail.com](mailto:tenned@gmail.com)**

## Yacht Club Display Case:

If you would like to display an item please

**Contact Richard Ganch [rich0153@comcast.net](mailto:rich0153@comcast.net)**

## Community Service Projects

**Loudon United Methodist Church** has requested the club to make “Food Pantries”. Volunteer is needed to lead the effort with more volunteers to assist

**Our Place** has asked for the club to build a kitchen work counter from red oak to match the existing cabinets. Someone is needed to lead the effort and volunteers are needed to assist **Contact Randy Neuhaus [rneuhaus22@gmail.com](mailto:rneuhaus22@gmail.com)**

# Wood Stored in Barn:

Rough cut dried Boards in the barn are for sale to the club members. The plywood and dimensional lumber (2X4, 2X6 etc...) in the back bay are NOT for sale. This wood is used for building ramps.



[Current Kiln and Barn wood Lumber Status](#)

Prices are marked on the wood. Select the wood you would like to purchase. Record the species, number of boards and the board feet or price for each species on the paper hanging on the center post in the barn. Pay the club treasurer, their name and address is posted above the clipboard.

We try to keep an updated barn inventory as shown below however boards can be sold at anytime. The club counts on you, the members, to record the boards removed so an accurate inventory can be maintained.

---

## Looking to add a woodworking tool or woodworking supplies to your collection?

Protected: Sale on Woodworking Supplies – Don't Miss Out!  
Looking for woodworking supplies or have extras collecting dust!

[Link to woodworking tools or supply sales](#)

Give them a second life with a fellow club member! Click the button above to explore unique finds and share your own treasures with our creative woodworking community.

---

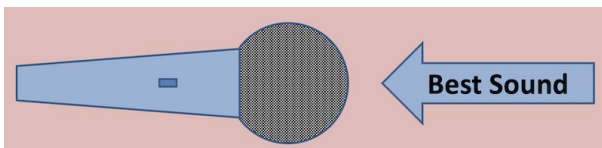
## [LINK to January Meeting on Google Drive](#)

Anyone with the link can access the contents as a viewer.  
Caution some users non-gmail accounts may require a secondary authorization by me which I will do as soon as possible. Ben LaPointe [benclapointe@gmail.com](mailto:benclapointe@gmail.com)

---

## Microphone training - Ron Cirincione

Ron instructed the club on the best way to hold and use the microphone.



[How to Drink a Microphone presentation link](#)

